

**MIPROMET**



# Clamps

for structural steel profiles

**miproClamp**

## Table of Contents

Table of Contents	2	NL-JO Internal pipe lifting holder with lining	8
Description of abbreviations, acronyms and designations	2	NL-M Automatic clamp for I-beams	8
NL Round profile clamp	3	NL-N Round profile clamp	9
NL-A Rectangular profile clamp	3	NL-O Round profile clamp with lining	9
NL-C Clamp for C-beams	4	NL-P Rectangular profile clamp	10
NL-D Clamp for I-beams	4	NL-R Automatic round profile clamp	10
NL-E Steel sheet pile holder	5	NL-RO Round profile clamp	11
NL-F Round profile clamp	5	NL-T Pipe clamp	11
NL-FO Round profile clamp with lining	6	NL-U Steel pipe lifting clamp	12
NL-G Steel sheet pile clamp	6	NL-W Clamp for I-beams	12
NL-H Profile clamp for HP profile	7	NL-Y I-beam holder	13
NL-J Internal pipe lifting holder	7	NL-Z I-beam clamp	13

## Index

NL	3	NL-D	4	NL-FO	6	NL-J	7	NL-N	9	NL-R	10	NL-U	12
NL-A	3	NL-E	5	NL-G	6	NL-JO	8	NL-O	9	NL-RO	11	NL-W	12
NL-C	4	NL-F	5	NL-H	7	NL-M	8	NL-P	10	NL-T	11	NL-Y	13
												NL-Z	13

## Description of abbreviations, acronyms and designations

MBL – Minimum Breaking Load  
WLL – Working Load Limit

**100% strength test**  
according to App. to EN 13155

Each product offered has undergone a strength test in accordance with the relevant annex to the harmonised standard PN-EN 13155

**2006/42/EC**  
manufactured according to Directive

The product complies with the Machinery Directive 2006/42/EC, which confirms the performance of tasks leading to the fulfilment of health and safety requirements for machines placed on the market for the first time in the EU.

**16 000**  
max. working cycles

Design operating lifetime of the device assuming nominal operating conditions and nominal load. The given parameter can be used to estimate the technical condition of the device or the degree of its wear.

**EN 13155**  
meets the Standard

The product meets the requirements of the indicated standard.

Working temperature  
**-20 +100°C**  
for steel elements

Permissible temperature range for steel elements during operation with nominal load. Products with covers, linings, linings or components made using thermoplastics have a different, usually narrower operating temperature range. Please refer to the product documentation for details.

Working temperature  
**-20 +60°C**  
for plastic elements

**CE** Declaration  
of conformity

The product is marked with the CE conformity mark, has an EC declaration of conformity, issued by the manufacturer, confirming on his sole responsibility that the marked product meets the requirements of EU directives.

**Made in EU**

Marking of the producer location. It confirms that the product was made within EU, from domestic materials, with the help of employees employed in accordance with EU labour law, meeting EU requirements concerning quality, working conditions and professional qualifications. The responsibility for the product lies with the EU legal entity.

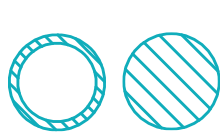
**24h**  
INSTOCK Program

Product covered by the Instock Program. Orders placed for this product, correctly placed by 11:00 a.m. are sent to the recipient on the same day. For products requiring individual marking or unusual packaging, the shipping time may be extended to 2 working days. The quantity of products ordered in the Rapid Dispatch mode is limited to the size of the stock. Detailed requirements of the Programme are described in the Rules and Regulations of the Rapid Dispatch Programme, available on the [www.mipromet.eu](http://www.mipromet.eu) website.

Mipromet Sp. z o.o. reserves the right to possible modifications and changes in the construction, materials and specifications of individual products. We have made every effort to ensure that the information presented is reliable and helpful, however, we are not responsible for the effects of actions taken on the basis of these contents. This material does not constitute an offer within the meaning of the Civil Code and is for informational or educational purposes only. The information provided in this publication is intended to help the reader to gain an overall understanding of the technical aspects of our offer and to select the best solutions. All products described in the catalogue have appropriate approvals, instructions and certificates.

The entire publication is the property of Mipromet Sp. z o.o. and is a work within the meaning of the Act of 4 February 1994 on Copyright and Related Rights (Journal of Laws No 90, item 631). No part of it may be distributed or copied in any way (electronic, mechanical or other) without written consent of Mipromet Sp. z o.o.

# NL Round profile clamp



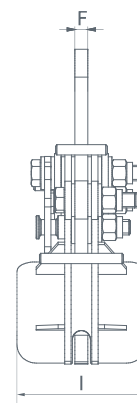
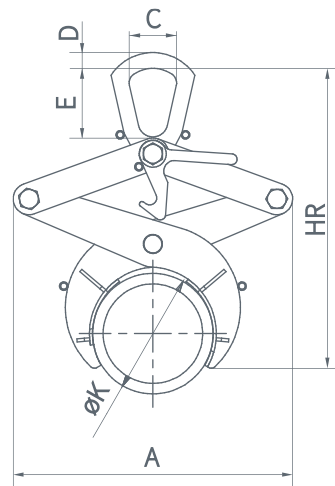
2006/42/EC  
manufactured according to Directive

EN 13155  
meets the Standard

-20 +100°C  
working temperature

16 000 strength test  
max. working cycles 100% according to PN-EN 13155

Made in EU



Code	WLL [kg]	Gripping range ØK [mm]	HR	Dimensions [mm]						Mass [kg]
NL 0.2	200	48,3 - 114,3	284 - 377	217 - 265	55	15	65	10	100	3,6
NL 0.5	500	88,9 - 150,0	369 - 452	286 - 322	55	20	80	15	150	10
NL 1.0	1 000	139,7 - 273,0	618 - 806	484 - 577	70	30	100	15	175	25
NL 2.0	2 000	244,5 - 323,9	725 - 843	627 - 671	85	30	125	20	200	42
NL 3.0	3 000	323,9 - 508,0	1059 - 1327	905 - 1020	90	35	140	25	250	105

# NL-A Rectangular profile clamp



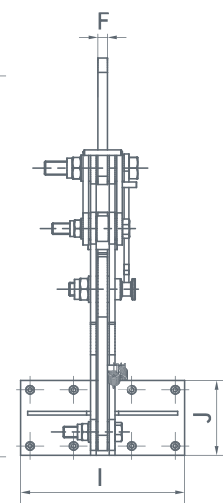
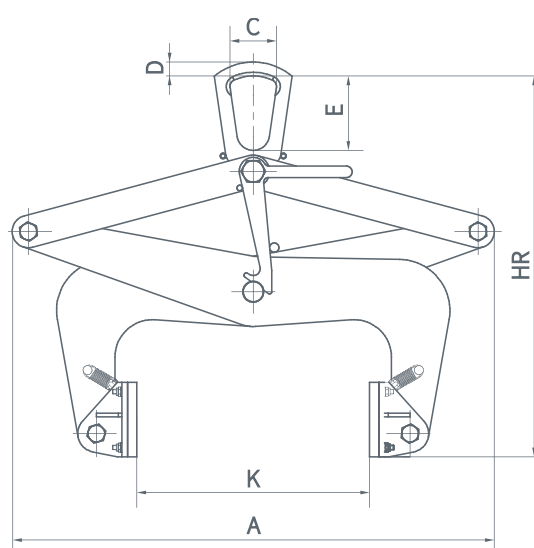
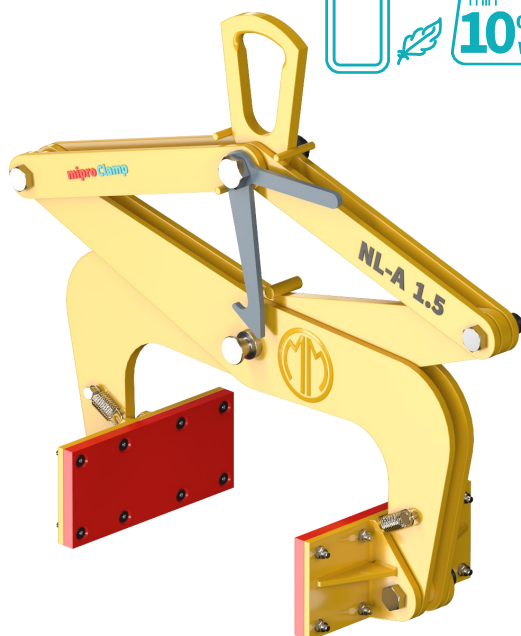
2006/42/EC  
manufactured according to Directive

EN 13155  
meets the Standard

-20 +60°C  
working temperature

16 000 strength test  
max. working cycles 100% according to PN-EN 13155

Made in EU



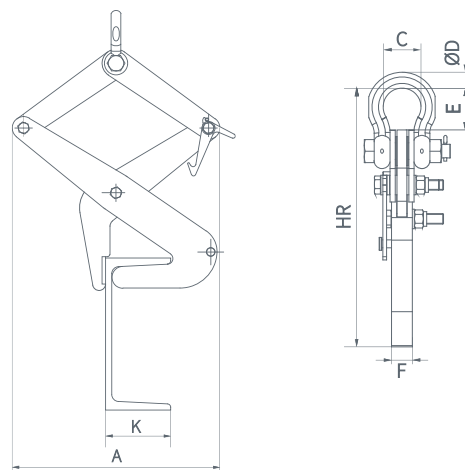
- Minimum jaw-load friction coefficient is 0.6
- Lining made of polyurethane

Code	WLL [kg]	Gripping range K [mm]	HR	Dimensions [mm]						Mass [kg]
NL-A 0.5	500	40 - 150	506 - 720	456 - 583	50	20	80	15	150	17
NL-A 1.0	1 000	50 - 250	588 - 989	571 - 802	70	30	100	20	200	35
NL-A 1.5	1 500	250 - 500	819 - 1231	889 - 1035	100	30	160	20	350	92
NL-A 2.5	2 500	470 - 750	951 - 1431	1011 - 1104	100	30	160	25	350	112

## NL-C Clamp for C-beams



Declaration of conformity  
 2006/42/EC manufactured according to Directive  
 EN 13155 meets the Standard  
 -20 +100°C working temperature  
 16 000 max. working cycles  
 strength test 100% according to PN-EN 13155  
 Made in EU

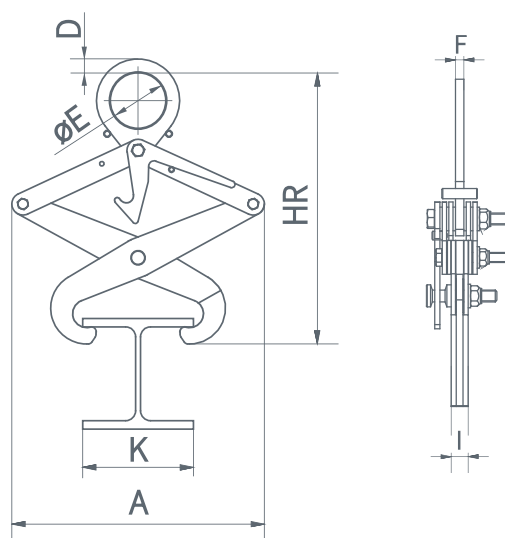


Code	WLL [kg]	Gripping range K [mm]	HR	E	ØD	C	F	Mass [kg]
NL-C 0.2	200	30 - 100	246	60	21	51	32	6,28
NL-C 0.5	500	40 - 120	357	53	20,5	49,5	32	15
NL-C 1.0	1 000	60 - 150	398	64	22,5	57	32	20

## NL-D Clamp for I-beams



Declaration of conformity  
 2006/42/EC manufactured according to Directive  
 EN 13155 meets the Standard  
 -20 +100°C working temperature  
 16 000 max. working cycles  
 strength test 100% according to PN-EN 13155  
 Made in EU



Code	WLL [kg]	Gripping range K [mm]	HR	A	ØE	D	F	I	Mass [kg]
NL-D 0.2	200	60 - 200	490 - 694	319 - 457	100	25	10	20	8,5
NL-D 0.5	500	80 - 240	542 - 765	351 - 498	100	30	12	27	14
NL-D 1.0	1 000	120 - 300	600 - 880	332 - 547	100	30	15	36	22
NL-D 2.0	2 000	240 - 400	675 - 910	458 - 596	100	32,5	20	50	40
NL-D 3.0	3 000	300 - 500	819 - 1109	559 - 725	120	37,5	25	59	67



# NL-E Steel sheet pile holder



Declaration of conformity

2006/42/EC manufactured according to Directive

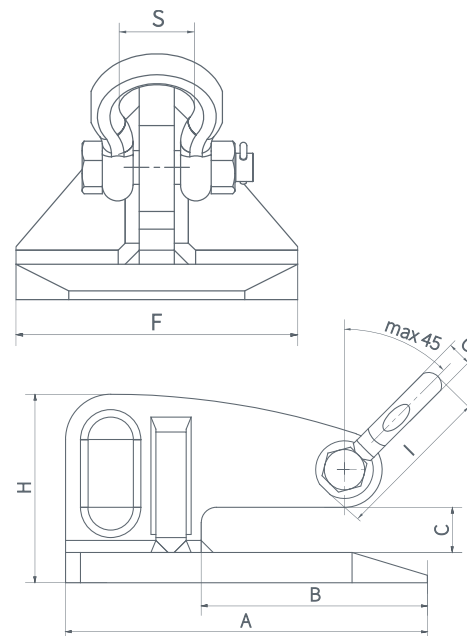
EN 13155 meets the Standard

-20 +100°C working temperature

16 000 max. working cycles

100% strength test according to PN-EN 13155

Made in EU



The handles are designed to work in pairs

Code	WLL/pair [kg]	F	S	H	A	B	C	G	I	Mass [kg]
NL-E 2.5	2 500	160	42	125	240	150	30	17,5	71,5	8

# NL-F Round profile clamp



min 10% WLL



Declaration of conformity

2006/42/EC manufactured according to Directive

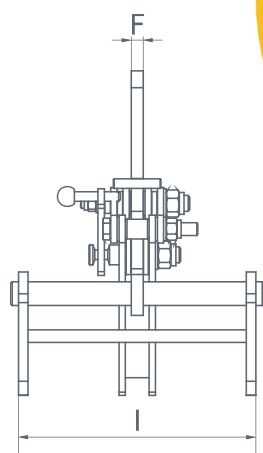
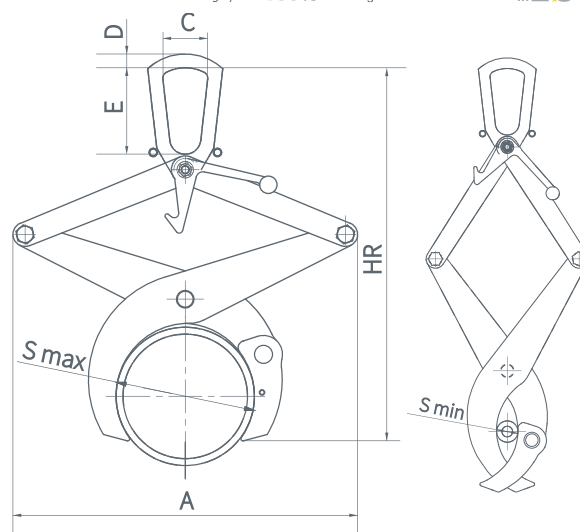
EN 13155 meets the Standard

-20 +100°C working temperature

16 000 max. working cycles

100% strength test according to PN-EN 13155

Made in EU



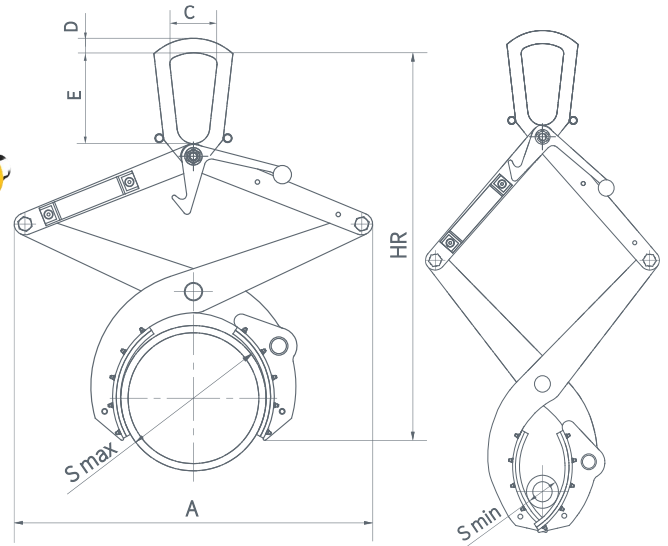
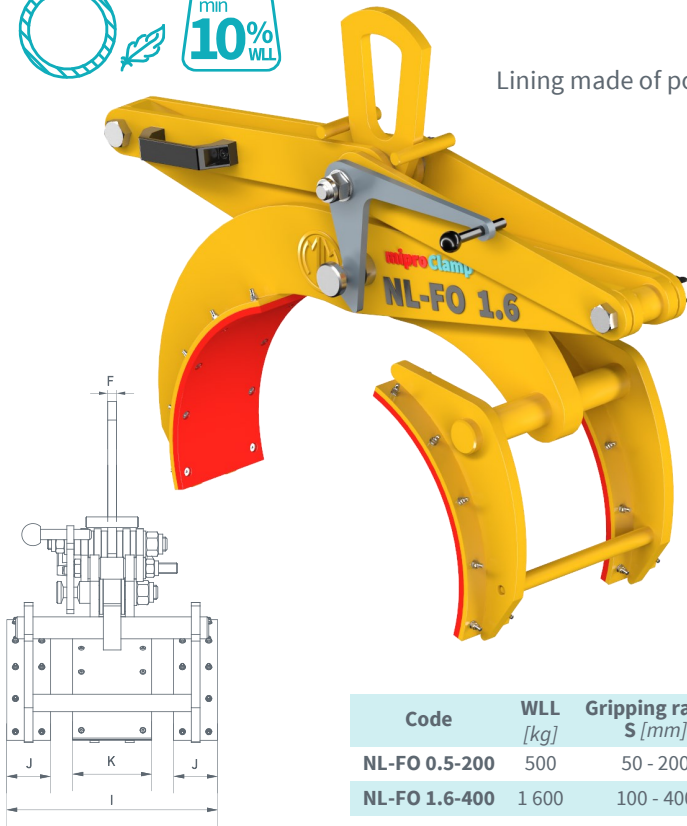
Code	WLL [kg]	Gripping range S [mm]	HR	Dimensions [mm]						Mass [kg]
				A	C	D	E	F	I	
NL-F 0.25-150	250	40 - 150	496 - 714	335 - 494	65	20	125	10	200	8
NL-F 0.25-250	250	60 - 250	558 - 826	294 - 494	65	20	125	12	250	12
NL-F 0.5-200	500	40 - 200	540 - 796	305 - 499	65	20	125	15	300	16
NL-F 0.5-350	500	100 - 350	735 - 1092	426 - 684	65	20	125	15	350	22
NL-F 0.5-500	500	200 - 500	896 - 1283	556 - 796	65	20	125	15	350	38
NL-F 1.6-400	1 600	100 - 400	862 - 1205	584 - 798	65	28	125	15	250	60

# NL-FO Round profile clamp with lining



CE Declaration of conformity 2006/42/EC manufactured according to Directive EN 13155 meets the Standard -20 +60°C working temperature  
16 000 max. working cycles strength test 100% according to PN-EN 13155 Made in EU

Lining made of polyurethane



Code	WLL [kg]	Gripping range S [mm]	HR	Dimensions [mm]								Mass [kg]
NL-FO 0.5-200	500	50 - 200	534 - 747	358 - 494	65	20	125	10	50	90	240	15,5
NL-FO 1.6-400	1 600	100 - 400	869 - 1207	585 - 796	65	28	125	15	75	130	310	65

# NL-G Steel sheet pile clamp

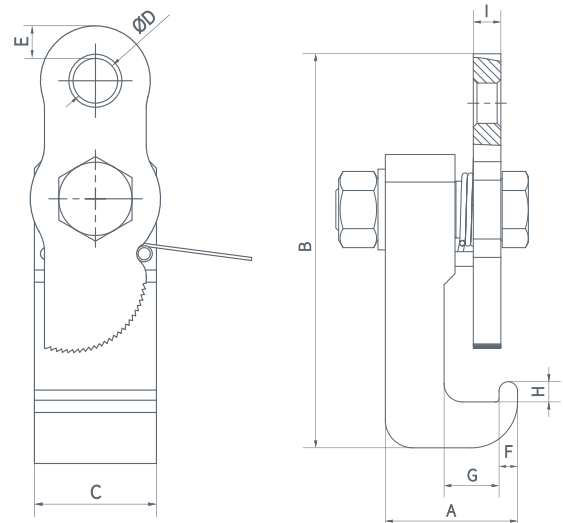


CE Declaration of conformity 2006/42/EC manufactured according to Directive EN 13155 meets the Standard -20 +100°C working temperature  
16 000 max. working cycles strength test 100% according to PN-EN 13155 Made in EU  
24h IN STOCK Program



The clamps are equipped with a pressure spring that allows pre-fixation of the handle on the edge of the sheet pile

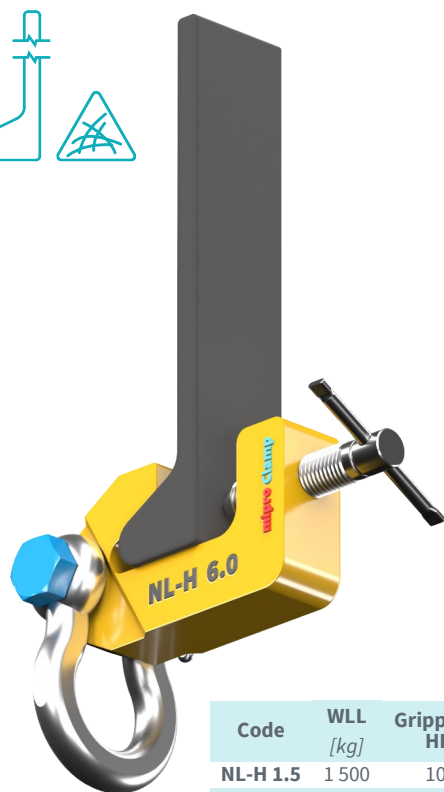
The clamps are designed to work in pairs



- NL-G 1,4 R – right hand
- NL-G 1,4 L – left hand

Code	WLL [kg]	Dimensions [mm]								Mass [kg]
NL-G 1.4 R	1 400	72	215	60	22	16	10	30	15	3,7
NL-G 1.4 L	1 400	72	215	60	22	16	10	30	15	3,7

# NL-H Profile clamp for HP profile



CE Declaration of conformity

2006/42/EC manufactured according to Directive

EN 13155 meets the Standard

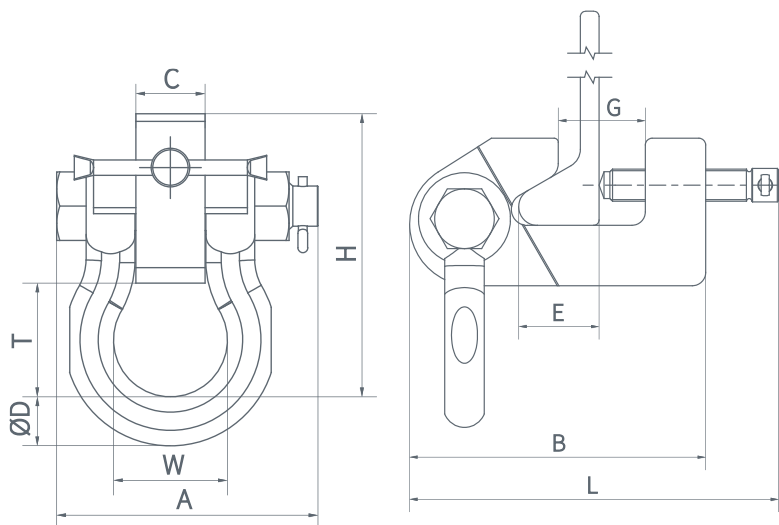
-20 +100°C working temperature

16 000 max. working cycles

100% strength test according to PN-EN 13155

Made in EU

24h INSTOCK Program



Code	WLL [kg]	Gripping range HP [mm]	Dimensions [mm]										Mass [kg]
			A	B	C	ØD	E	G	H	L	T	W	
NL-H 1.5	1 500	100 - 240	154	165	40	27	22,5 - 46	75	177	191 - 211	75	67	5,6
NL-H 3.0	3 000	160 - 320	170	221	45	32	29 - 60	65	184	250 - 275	74	74	10,5
NL-H 6.0	6 000	300 - 430	170	260	60	32	54 - 82,5	85	199	306 - 340,5	64	74	14,5

# NL-J Internal pipe lifting holder



CE Declaration of conformity

2006/42/EC manufactured according to Directive

EN 13155 meets the Standard

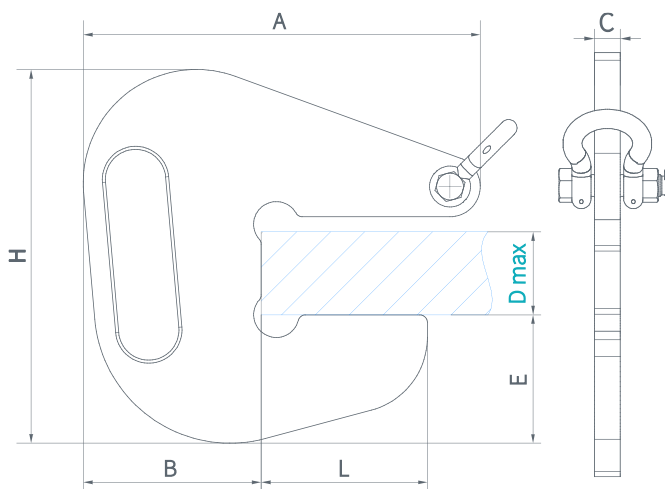
-20 +100°C working temperature

16 000 max. working cycles

100% strength test according to PN-EN 13155

Made in EU

24h INSTOCK Program



Code	WLL/pair [kg]	Dimensions [mm]							Mass [kg]
		A	B	L	C	D max	E	H	
NL-J 2.0	2 000	263	118	110	15	55	85	248	4,5
NL-J 4.0	4 000	297	142	135	20	75	95	280	9
NL-J 6.0	6 000	323	145,5	177,5	25	100	115	335	15
NL-J 10.0	10 000	415	170	245	35	150	145	448	34

The handles are designed to work in pairs

# NL-JO Internal pipe lifting holder with lining



CE Declaration of conformity

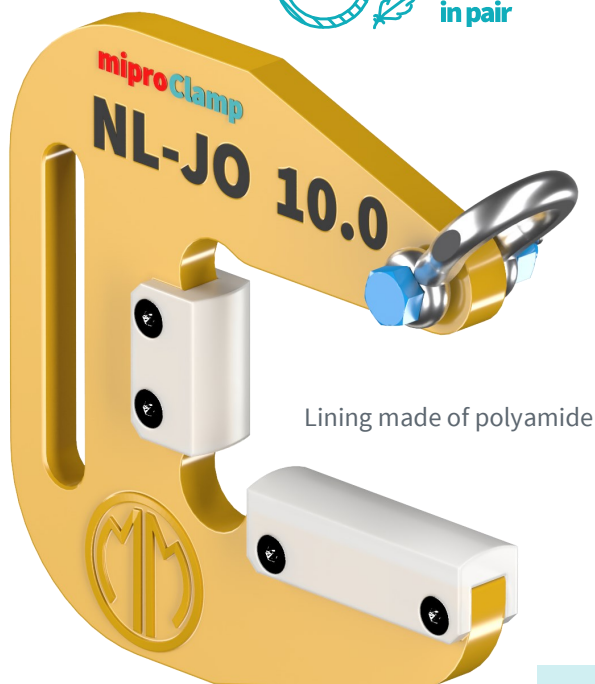
2006/42/EC manufactured according to Directive

EN 13155 meets the Standard

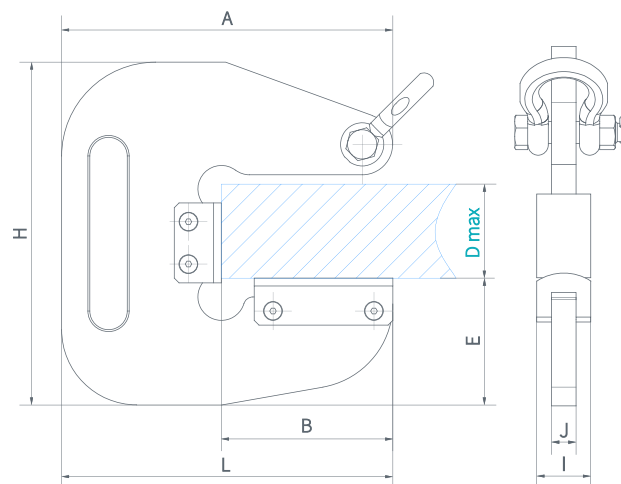
-20 +60°C working temperature

16 000 max. working cycles 100% strength test according to PN-EN 13155

Made in EU



Lining made of polyamide



The handles are designed to work in pairs

Code	WLL/pair [kg]	Dimensions [mm]								Mass [kg]
		L	A	B	D max	E	H	I	J	
NL-JO 6.0	6 000	353	353	182,5	100	135	365	55	25	17,5
NL-JO 10.0	10 000	470	470	265	150	175	485	60	35	44

# NL-M Automatic clamp for I-beams



CE Declaration of conformity

2006/42/EC manufactured according to Directive

EN 13155 meets the Standard

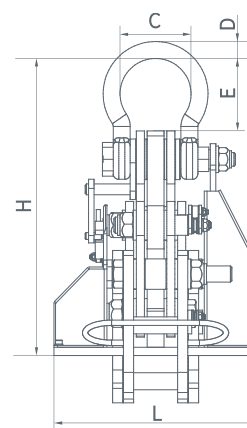
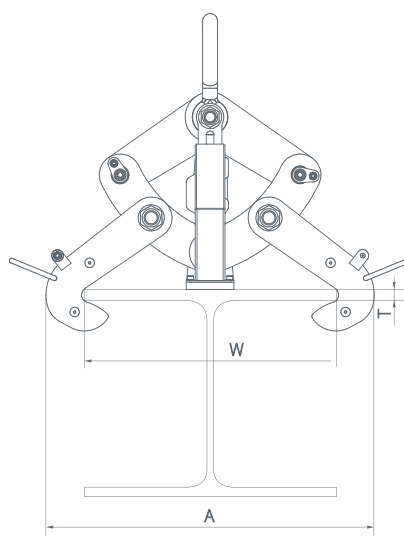
-20 +100°C working temperature

16 000 max. working cycles 100% strength test according to PN-EN 13155

Made in EU



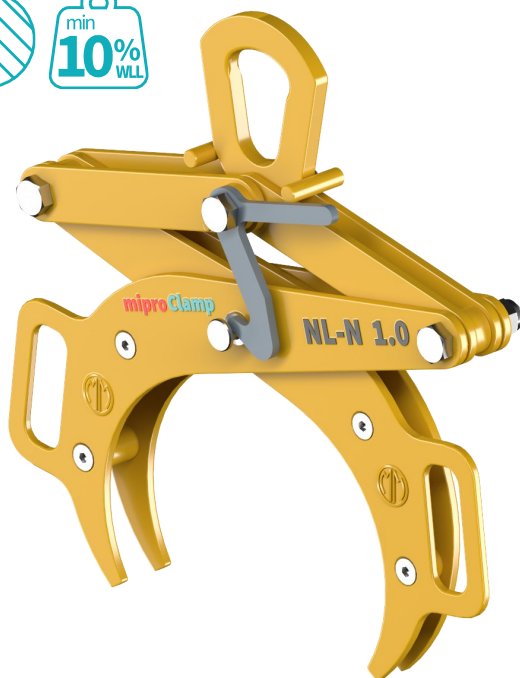
- The clamp is equipped with an automatic lock



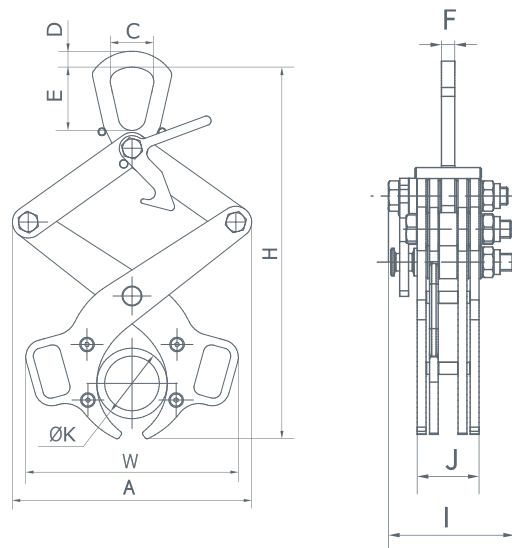
Code	WLL [kg]	Gripping range W [mm]	Dimensions [mm]							Mass [kg]
			A	H	T	C	D	E	L	
NL-M 5.0	5 000	100 - 260	299 - 431	439	6,5 - 25	57	22,5	107	300	42



## NL-N Round profile clamp

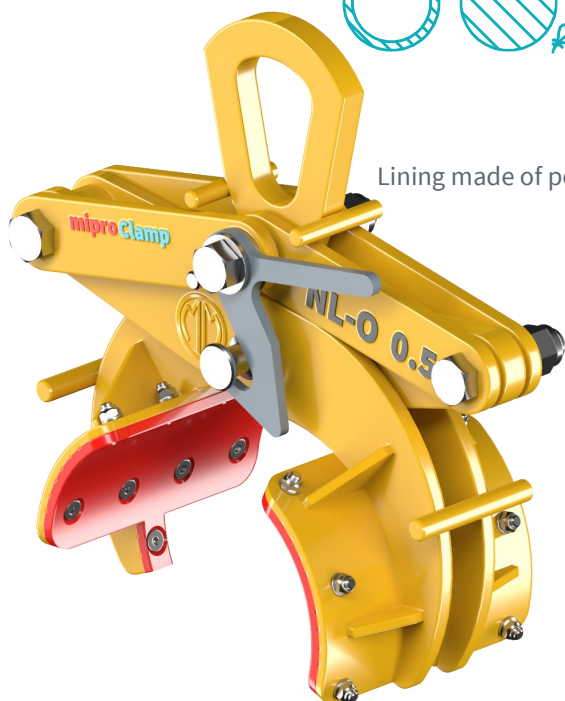


Declaration of conformity  
 2006/42/EC manufactured according to Directive  
 EN 13155 meets the Standard  
 -20 +100°C working temperature  
 16 000 max. working cycles  
 strength test 100% according to PN-EN 13155  
 Made in EU



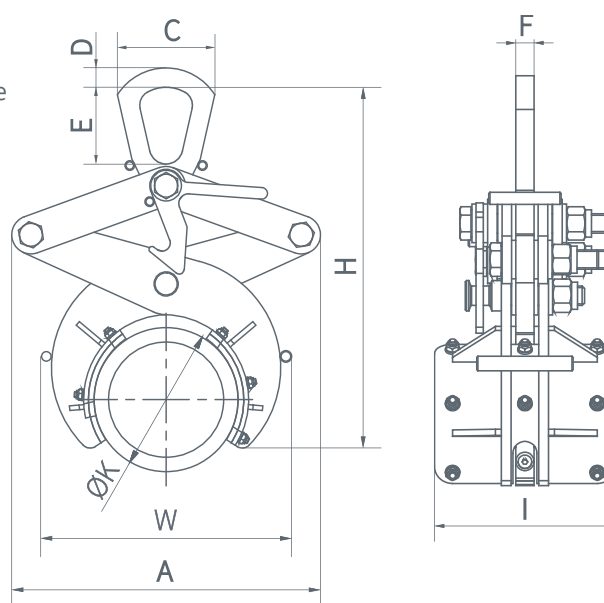
Code	WLL [kg]	Gripping range ØK [mm]	A	W	Dimensions [mm]						I	J	F	Mass [kg]
NL-N 0.5	500	88,9 - 150	302 - 344	268 - 303	55	20	80	377 - 469	114	56	12	9		
NL-N 1.0	1 000	139,7 - 273	420 - 501	416 - 507	70	30	100	587 - 751	131	59	15	19		

## NL-O Round profile clamp with lining



Lining made of polyurethane

Declaration of conformity  
 2006/42/EC manufactured according to Directive  
 EN 13155 meets the Standard  
 -20 +60°C working temperature  
 16 000 max. working cycles  
 strength test 100% according to PN-EN 13155  
 Made in EU

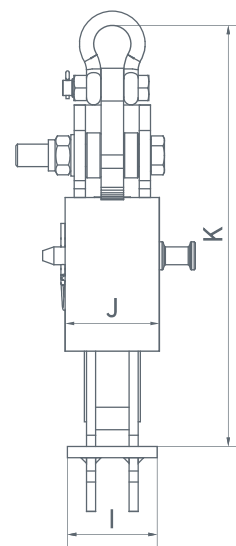
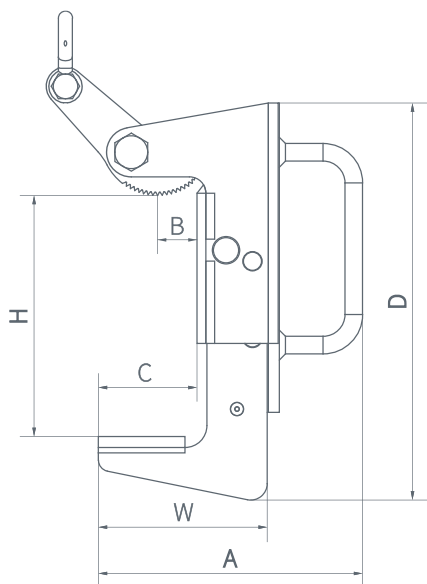


Code	WLL [kg]	Gripping range ØK [mm]	A	W	Dimensions [mm]						I	F	Mass [kg]
NL-O 0.5	500	88,9 - 150	287 - 322	215 - 262	55	20	80	376 - 459	150	15	11		
NL-O 1.0	1 000	139,7 - 273	483 - 576	354 - 459	70	30	100	625 - 815	50	15	23		

## NL-P Rectangular profile clamp



Declaration of conformity  
 2006/42/EC manufactured according to Directive  
 EN 13155 meets the Standard  
 -20 +100°C working temperature  
 16 000 max. working cycles  
 strength test 100% according to PN-EN 13155  
 Made in EU

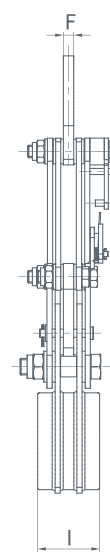
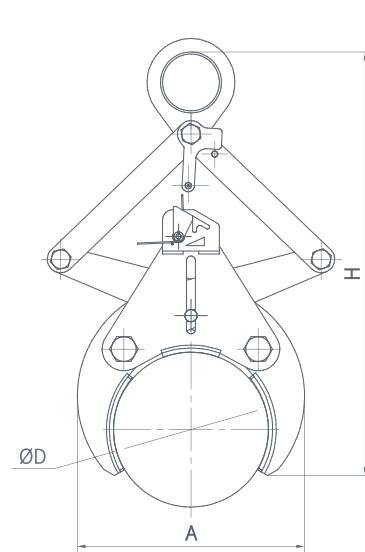


Code	WLL [kg]	Gripping range H [mm]	Dimensions [mm]								Mass [kg]
			A	W	B	C	D	I	J	K	
NL-P 0.7-220	700	150, 160, 180, 200, 220	241	154	36	90	362	80	84	375	10

## NL-R Automatic round profile clamp

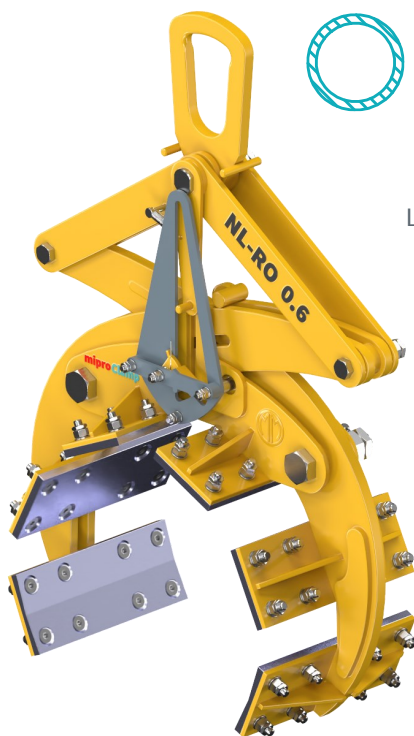


Declaration of conformity  
 2006/42/EC manufactured according to Directive  
 EN 13155 meets the Standard  
 -20 +100°C working temperature  
 16 000 max. working cycles  
 strength test 100% according to PN-EN 13155  
 Made in EU



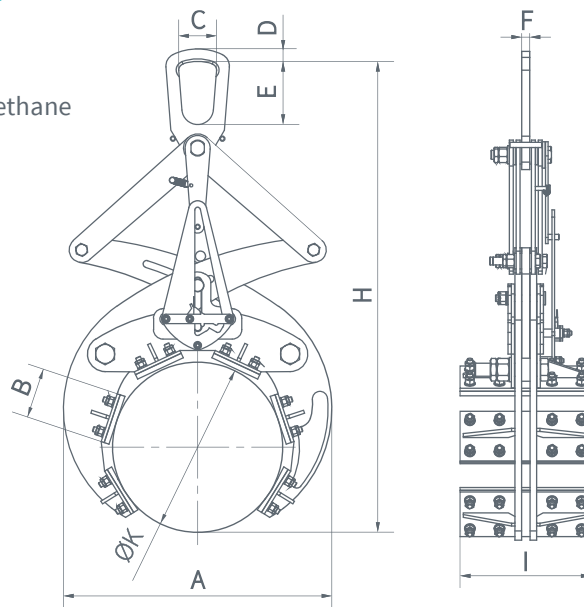
Code	WLL [kg]	Gripping range ØD [mm]	Dimensions [mm]				Mass [kg]
A	H	I	F				
NL-R 0.5	500	90 - 150	192 - 235	363 - 519	60	10	5,5
NL-R 1.0	1 000	140 - 225	270 - 320	531 - 713	80	15	16

# NL-RO Round profile clamp



CE Declaration of conformity 2006/42/EC manufactured according to Directive EN 13155 meets the Standard -20 +60°C working temperature  
16 000 max. working cycles 100% strength test according to PN-EN 13155 Made in EU

Lining made of polyurethane



Code	WLL [kg]	Gripping range ØK [mm]	Dimensions [mm]								Mass [kg]
			A	H	B	C	D	E	I	F	
NL-RO 0.6	600	270 - 300	426 - 446	720 - 747	80	60	25	100	200	12	26

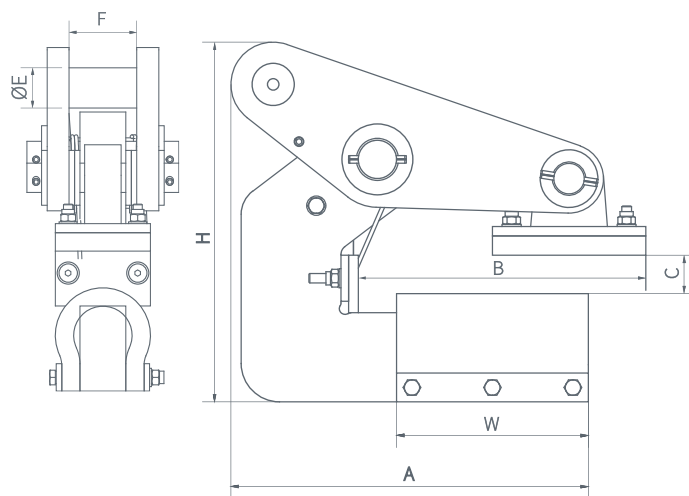
# NL-T Pipe clamp



CE Declaration of conformity 2006/42/EC manufactured according to Directive EN 13155 meets the Standard -20 +60°C working temperature  
16 000 max. working cycles 100% strength test according to PN-EN 13155 Made in EU



Lining made of polyurethane



The clamps are equipped with a pressure spring that allows initial fixing on the load

The clamps are designed to work in pairs

Code	WLL/ pair [kg]	Gripping range C [mm]	Dimensions [mm]							Mass [kg]
			A	W	H	B	ØE	F		
NL-T 1.0	1 000	0 - 10	175	100	170	150	16	27	3	
NL-T 2.0	2 000	0 - 10	186	100	188	150	22	37	6	

# NL-U Steel pipe lifting clamp



Possibility to lift pipes with an offset center of gravity (max deviation 15°)

15° MAX.



Declaration of conformity

2006/42/EC manufactured according to Directive

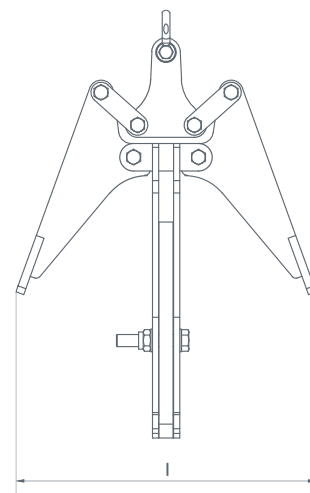
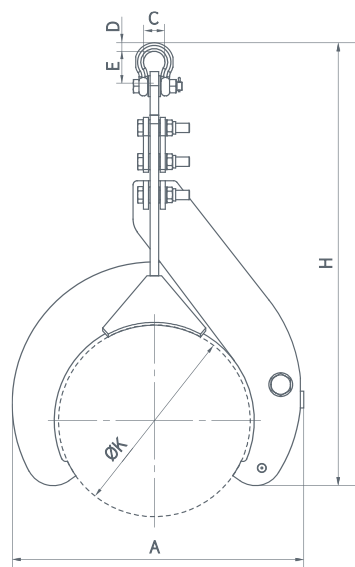
EN 13155 meets the Standard

-20 +100°C working temperature

16 000 max. working cycles

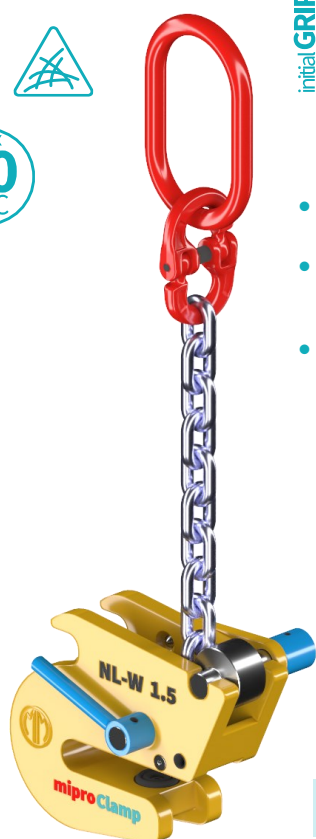
100% strength test according to PN-EN 13155

Made in EU



Code	WLL [kg]	Gripping range ØK [mm]	Dimensions [mm]						Mass [kg]
			A	H	C	D	E	I	
NL-U 2.3	2 300	457	473 - 695	880	49,5	20,5	70	740	100

# NL-W Clamp for I-beams



Declaration of conformity

2006/42/EC manufactured according to Directive

EN 13155 meets the Standard

-20 +100°C working temperature

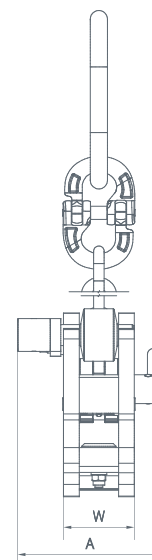
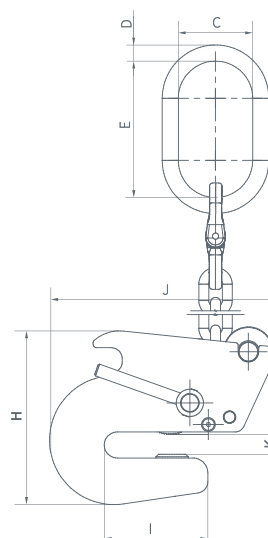
16 000 max. working cycles

100% strength test according to PN-EN 13155

Made in EU



- The minimum load on the handle is 10% of the lifting capacity
- The handle is designed to be rotated and transport I-sections, type IPE, HEB and HEA
- The maximum hardness of the lifted material is 20 HRC



Code	WLL [kg]	Gripping range K [mm]	Dimensions [mm]								Mass [kg]
			A	W	H	I	J	C	D	E	
NL-W 1.5	1 500	6 - 16	110	54	140	84	183	60	13	110	6



## NL-Y I-beam holder



Declaration of conformity

2006/42/EC manufactured according to Directive

EN 13155 meets the Standard

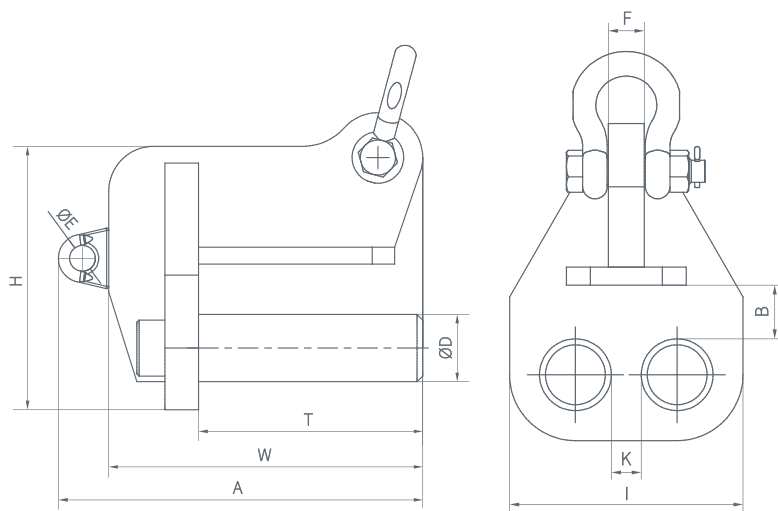
-20 +100°C working temperature

16 000 max. working cycles

100% strength test according to PN-EN 13155

Made in EU

- The capacity of the handle 5 000 kg applies to one handle
- The handles are designed to work in pairs



Code	WLL [kg]	Dimensions [mm]										Mass [kg]
NL-Y 5.0	5 000	A	W	T	ØE	ØD	H	I	K	B	F	28

## NL-Z I-beam clamp



Declaration of conformity

2006/42/EC manufactured according to Directive

EN 13155 meets the Standard

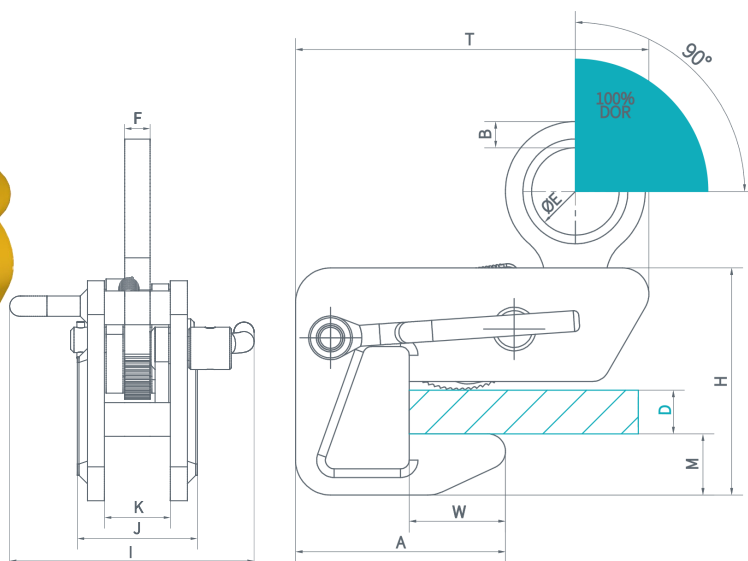
-20 +100°C working temperature

16 000 max. working cycles

100% strength test according to PN-EN 13155

Made in EU

- The capacity of the handle 1 000 kg applies to one handle
- The handles are designed to work in pairs



Code	WLL [kg]	Gripping range D [mm]	Dimensions [mm]										Mass [kg]
NL-Z 1.0	1 000	0 - 25	A	W	T	ØE	H	M	B	I	J	K	F