

MIPROMET



Spool & cable drum lifters

miproClamp

Table of Contents

Table of Contents	2	GR-J Spool and cable drum lifter	6
Description of abbreviations, acronyms and designa-	2	GR-K Spool and cable drum lifter	7
GR Spool and cable drum lifter	3	GR-KK Lifting beam for spool and cable drum	7
GR-C Spool and cable drum lifter	3	GR-M Spool and cable drum lifter	8
GR-D Spool and cable drum lifter	4	GR-N Automatic spool and cable drum lifter	8
GR-E Spool and cable drum lifter	4	GR-O Spool and cable drum lifter	9
GR-G Spool and cable drum lifter	5	GR-P Spool and cable drum lifter	9
GR-H Spool and cable drum lifter	5	GR-R Wire spool rack	10
GR-I Spool and cable drum lifter	6	GR-S Spool and cable drum lifter	10

Index

GR	3	GR-E	4	GR-I	6	GR-KK	7	GR-O	9	GR-S	10
GR-C	3	GR-G	5	GR-J	6	GR-M	8	GR-P	9		
GR-D	4	GR-H	5	GR-K	7	GR-N	8	GR-R	10		

Description of abbreviations, acronyms and designations

WLL – Working Load Limit

100% strength test
according to App. to EN 13155

Each product offered has undergone a strength test in accordance with the relevant annex to the harmonised standard PN-EN 13155

2006/42/EC
manufactured according to Directive

The product complies with the Machinery Directive 2006/42/EC, which confirms the performance of tasks leading to the fulfilment of health and safety requirements for machines placed on the market for the first time in the EU.

16 000
max. working cycles

Design operating lifetime of the device assuming nominal operating conditions and nominal load. The given parameter can be used to estimate the technical condition of the device or the degree of its wear.

EN 13155
meets the Standard

The product meets the requirements of the indicated standard.

Working temperature
-20 +100°C
for steel elements

Permissible temperature range for steel elements during operation with nominal load. Products with covers, linings, linings or components made using thermoplastics have a different, usually narrower operating temperature range. Please refer to the product documentation for details.

Working temperature
-20 +60°C
for plastic elements

CE
Declaration of conformity

The product is marked with the CE conformity mark, has an EC declaration of conformity, issued by the manufacturer, confirming on his sole responsibility that the marked product meets the requirements of EU directives.

Made in EU

Marking of the producer location. It confirms that the product was made within EU, from domestic materials, with the help of employees employed in accordance with EU labour law, meeting EU requirements concerning quality, working conditions and professional qualifications. The responsibility for the product lies with the EU legal entity.

24h
INSTOCK Program

Product covered by the Instock Program. Orders placed for this product, correctly placed by 11:00 a.m. are sent to the recipient on the same day. For products requiring individual marking or unusual packaging, the shipping time may be extended to 2 working days. The quantity of products ordered in the Rapid Dispatch mode is limited to the size of the stock. Detailed requirements of the Programme are described in the Rules and Regulations of the Rapid Dispatch Programme, available on the www.mipromet.eu website.

Mipromet Sp. z o.o. reserves the right to possible modifications and changes in the construction, materials and specifications of individual products. We have made every effort to ensure that the information presented is reliable and helpful, however, we are not responsible for the effects of actions taken on the basis of these contents. This material does not constitute an offer within the meaning of the Civil Code and is for informational or educational purposes only. The information provided in this publication is intended to help the reader to gain an overall understanding of the technical aspects of our offer and to select the best solutions. All products described in the catalogue have appropriate approvals, instructions and certificates.

The entire publication is the property of Mipromet Sp. z o.o. and is a work within the meaning of the Act of 4 February 1994 on Copyright and Related Rights (Journal of Laws No 90, item 631). No part of it may be distributed or copied in any way (electronic, mechanical or other) without written consent of Mipromet Sp. z o.o.

GR Spool and cable drum lifter



to work
in pairs



Declaration
of conformity

2006/42/EC
manufactured according to Directive

EN 13155
meets the Standard

-20 +100°C
working temperature

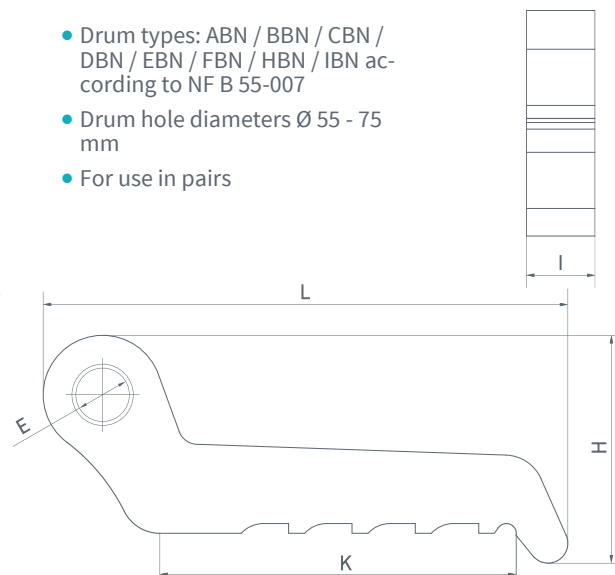
16 000
max. working cycles

strength test
100% according to PN-EN 13155

Made in EU



- Drum types: ABN / BBN / CBN / DBN / EBN / FBN / HBN / IBN according to NF B 55-007
- Drum hole diameters \varnothing 55 - 75 mm
- For use in pairs



CODE	WLL/pair [kg]	Dimensions [mm]					Mass [kg]
		L	K	H	\varnothing E	I	
GR 13	13 000	265	180	115	27	35	3,2

GR-C Spool and cable drum lifter



to work
in pairs



Declaration
of conformity

2006/42/EC
manufactured according to Directive

EN 13155
meets the Standard

-20 +100°C
working temperature

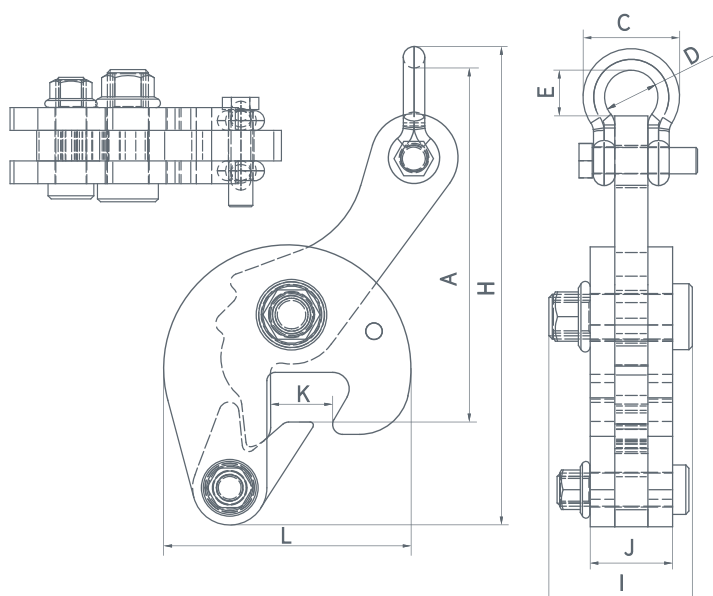
16 000
max. working cycles

strength test
100% according to PN-EN 13155

Made in EU



- For use in pairs
- The holder is intended for reels with an edge preventing the hooks from slipping off

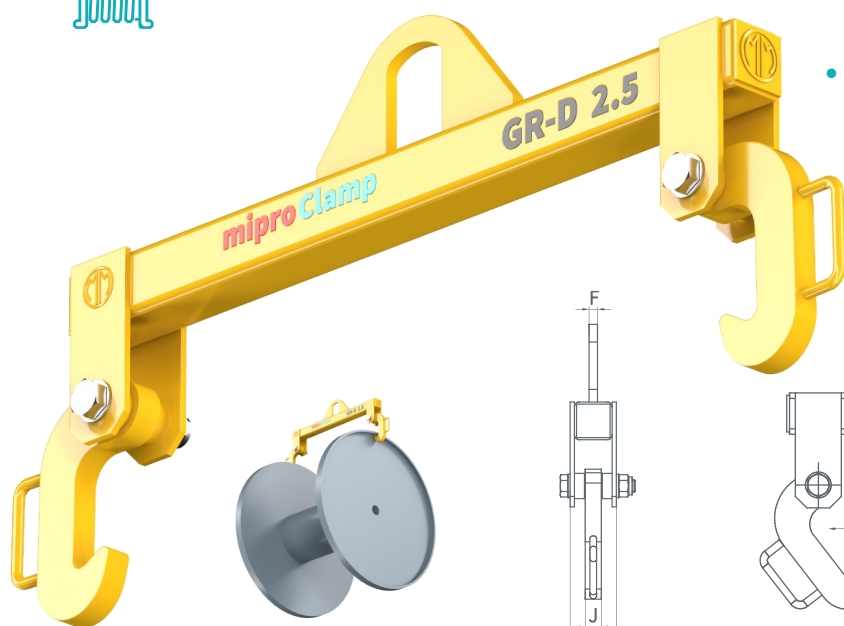


CODE	WLL/pair [kg]	Dimensions [mm]							Mass [kg]
		K	L	H	A	I	J	C	
GR-C 1.5	1 500	36	150	290	215	87	50	58,5	6

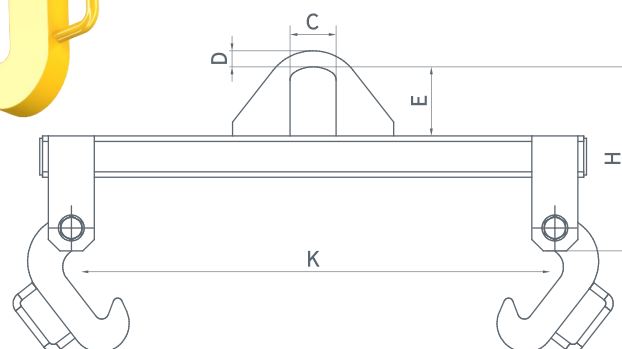
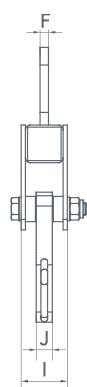
GR-D Spool and cable drum lifter



Declaration of conformity
 2006/42/EC manufactured according to Directive
 EN 13155 meets the Standard
 -20 +100°C working temperature
 16 000 max. working cycles
 strength test 100% according to PN-EN 13155
 Made in EU



- The holder is intended for cable drums with a width from 1100 mm to 1190 mm and a diameter of 1600 mm, with an edge preventing the hooks from slipping off

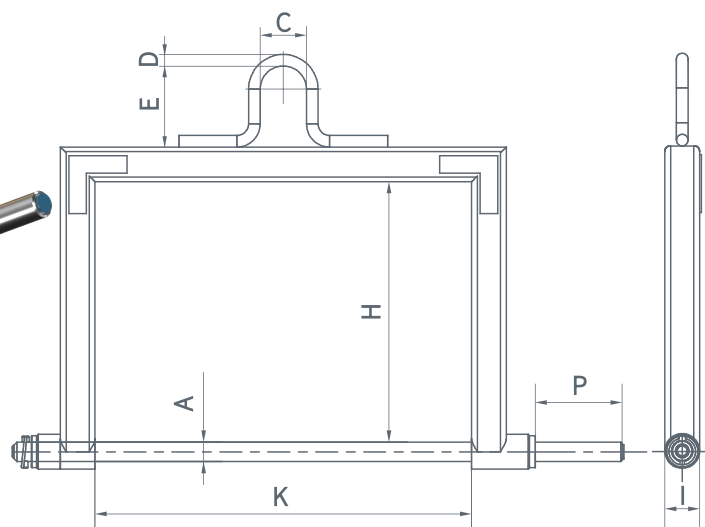


CODE	WLL [kg]	Gripping range K [mm]	Dimensions [mm]							Mass [kg]
			H	C	D	øE	I	J	F	
GR-D 2.5	2 500	1 100 - 1 190	400	100	35	150	110	38	20	60

GR-E Spool and cable drum lifter



Declaration of conformity
 2006/42/EC manufactured according to Directive
 EN 13155 meets the Standard
 -20 +100°C working temperature
 16 000 max. working cycles
 strength test 100% according to PN-EN 13155
 Made in EU

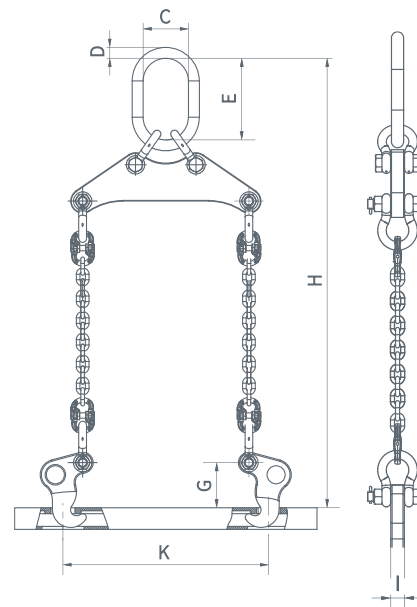
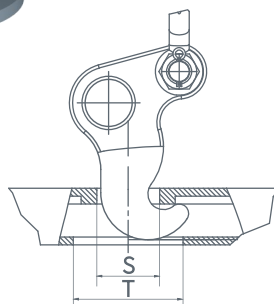


CODE	WLL [kg]	Dimensions [mm]								Mass [kg]
		K	H	øA	P	C	øD	E	I	
GR-E 0.6	600	650	450	33,7	150	80	20	140	60	22

GR-G Spool and cable drum lifter



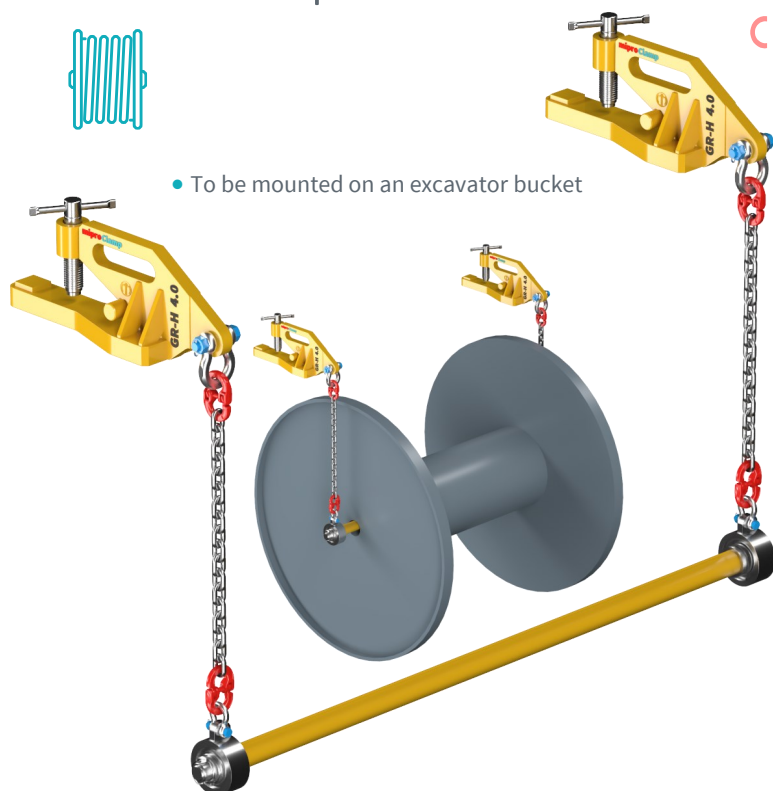
- For carrying reels with shipping holes on the sides



CE Declaration of conformity 2006/42/EC manufactured according to Directive EN 13155 meets the Standard -20 +100°C working temperature
16 000 max. working cycles 100% strength test according to PN-EN 13155 Made in EU

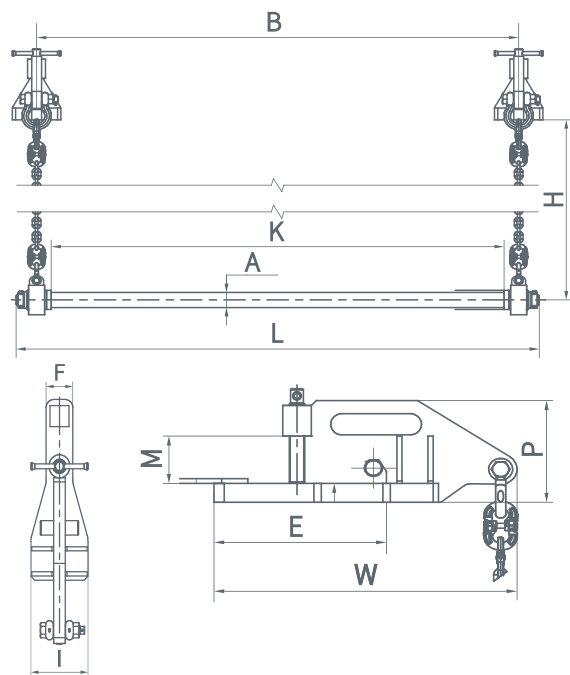
CODE	WLL [kg]	H	K	øT	øS	G	C	øD	E	I	Mass [kg]
GR-G 2.0	2 000	~743	340	70	40	74	75	18	135	20	9

GR-H Spool and cable drum lifter



- To be mounted on an excavator bucket

CE Declaration of conformity 2006/42/EC manufactured according to Directive EN 13155 meets the Standard -20 +100°C working temperature
16 000 max. working cycles 100% strength test according to PN-EN 13155 Made in EU



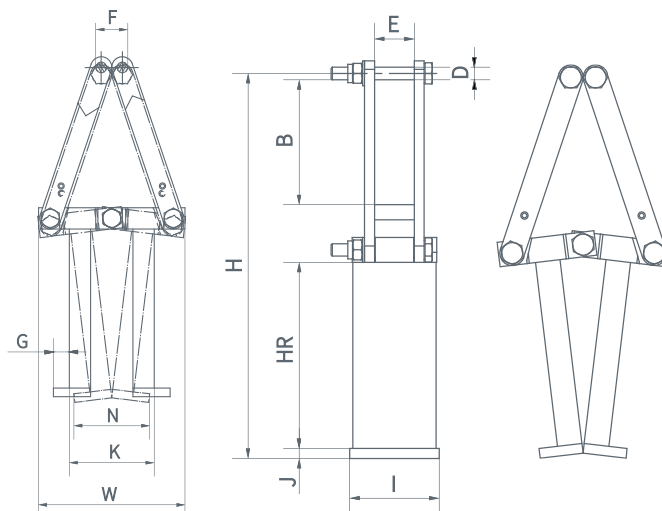
CODE	WLL [kg]	L	K	B	øA	H	W	E	P	M	I	F	Mass [kg]
GR-H 4.0	4 000	1 617	1 400	1 491	51	1 200	584	333	215	100	150	70	80

GR-I Spool and cable drum lifter



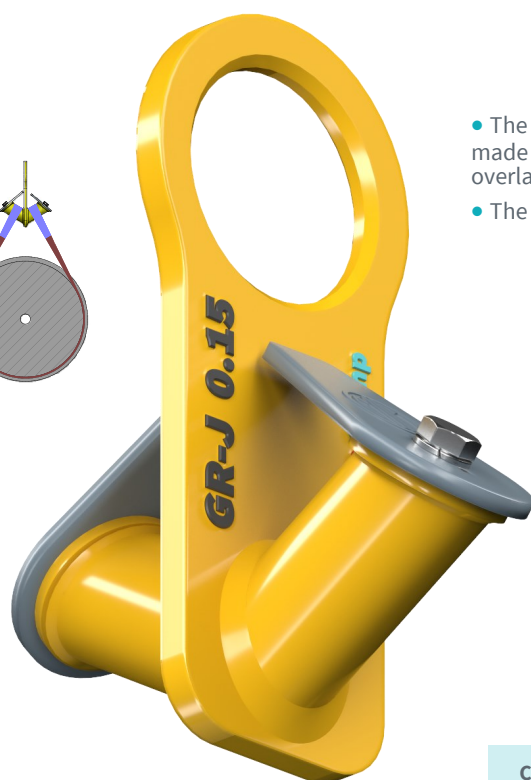
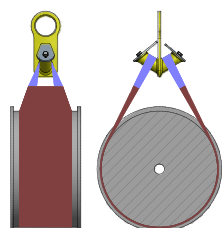
Declaration of conformity
 2006/42/EC manufactured according to Directive
 EN 13155 meets the Standard
 -20 +100°C working temperature
 16 000 max. working cycles
 strength test 100% according to PN-EN 13155
 Made in EU

- For reels with a central hole with a diameter of Ø80 mm



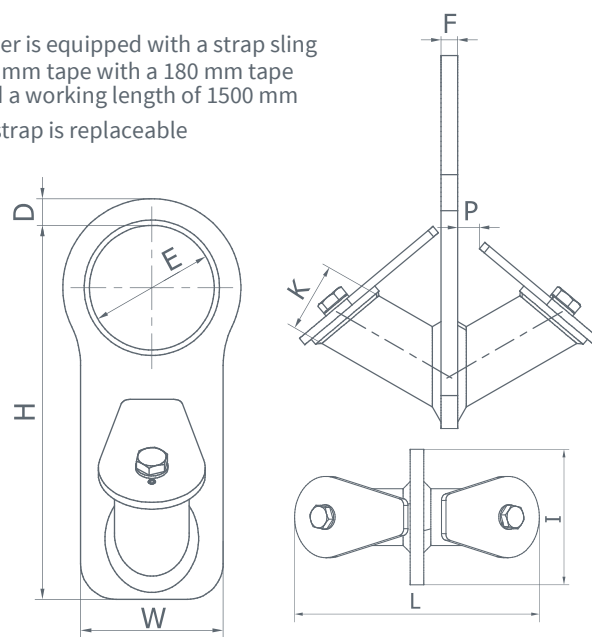
CODE	WLL	Dimensions [mm]											Mass	
	[kg]	W	ØK	N	F	G	H	HR	B	I	J	ØD		E
GR-I 0.5	500	138	80	71.4	30	15	310	150	101	72	8	10	32	3.5

GR-J Spool and cable drum lifter



Declaration of conformity
 2006/42/EC manufactured according to Directive
 EN 13155 meets the Standard
 -20 +100°C working temperature
 16 000 max. working cycles
 strength test 100% according to PN-EN 13155
 Made in EU

- The gripper is equipped with a strap sling made of 30 mm tape with a 180 mm tape overlay and a working length of 1500 mm
- The belt strap is replaceable



CODE	WLL [kg]	Dimensions [mm]										Mass [kg]
GR-J 0.15	150	L	I	H	W	D	øE	øK	F	P		
		181	100	210	80	15	70	42	10	13		2,5

GR-K Spool and cable drum lifter



2006/42/EC
manufactured according to Directive

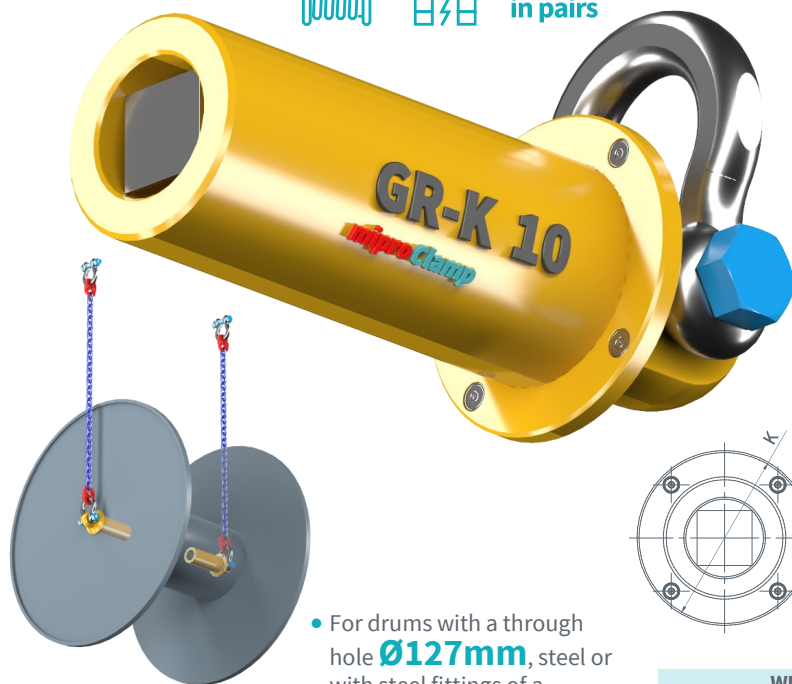
EN 13155
meets the Standard

-20 +100°C
working temperature

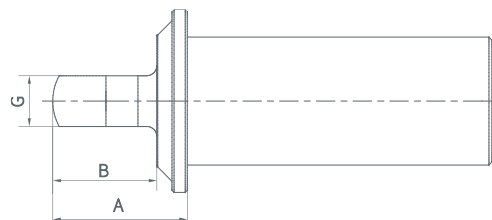
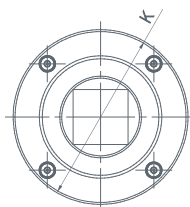
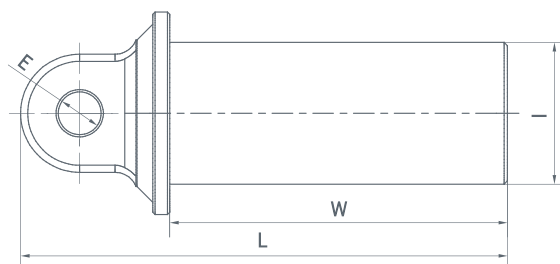
16 000
max. working cycles

strength test
100% according to PN-EN 13155

Made in EU



- For use in pairs
- Equipped with magnets for easy mounting on the cable drum



- For drums with a through hole $\varnothing 127\text{mm}$, steel or with steel fittings of a through hole

CODE	WLL/pair [kg]	Dimensions [mm]								Mass [kg]
GR-K 10	10 000	L	W	$\varnothing I$	$\varnothing E$	$\varnothing K$	A	B	G	
		432,5	300	126	38	180	132,5	102,5	50	27,5

GR-KK Complete lifting beam for spool and cable drum



2006/42/EC
manufactured according to Directive

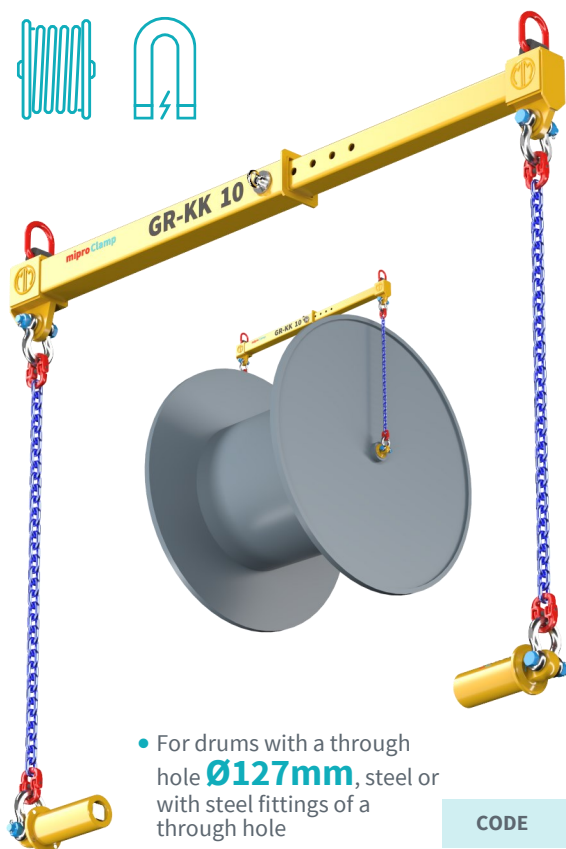
EN 13155
meets the Standard

-20 +100°C
working temperature

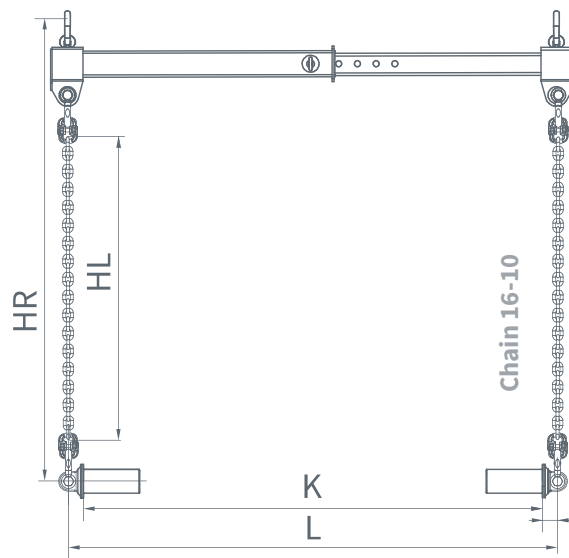
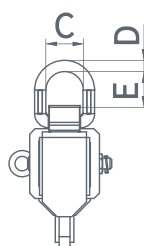
16 000
max. working cycles

strength test
100% according to PN-EN 13155

Made in EU

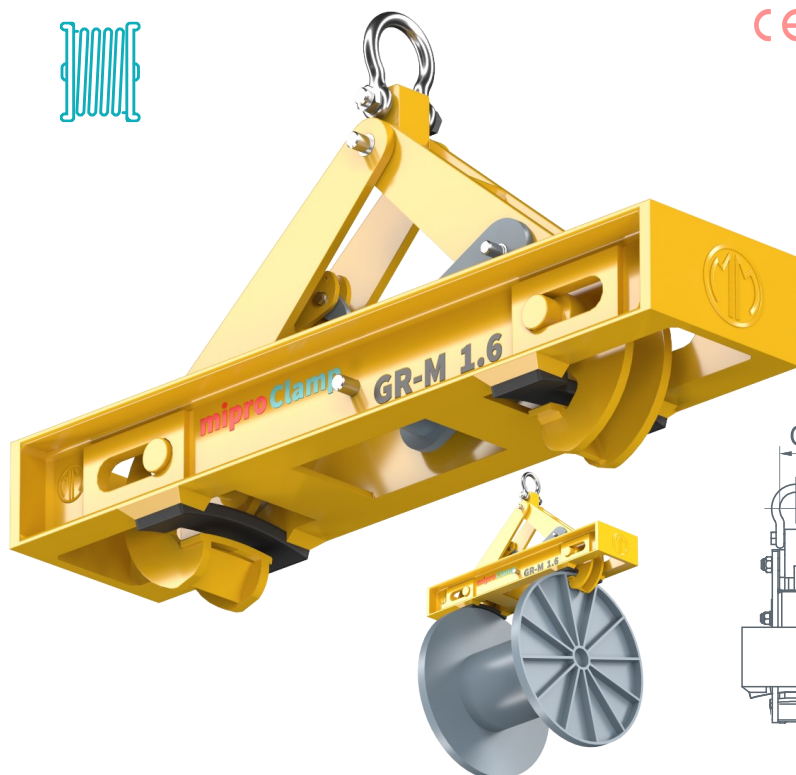


- For drums with a through hole $\varnothing 127\text{mm}$, steel or with steel fittings of a through hole

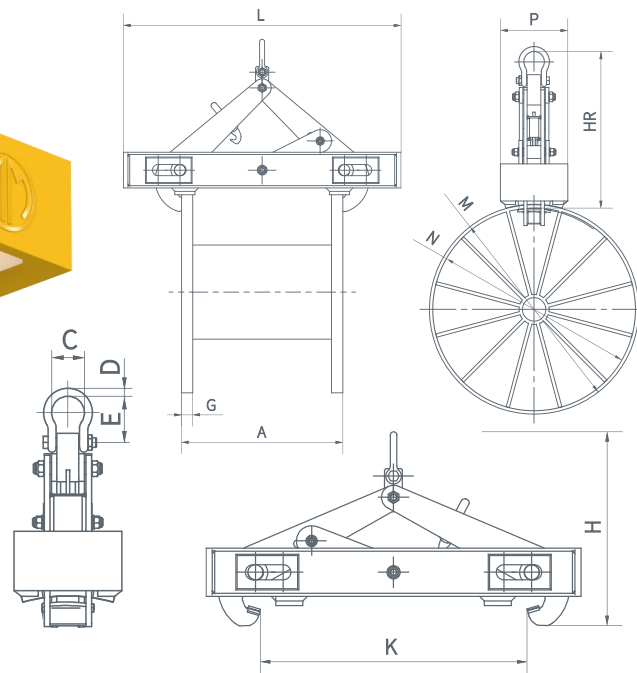


CODE	WLL [kg]	L	Dimensions [mm]								Mass [kg]
GR-KK 10	10 000		K	I	HR	HL	C	$\varnothing D$	E		
		2 610	2100 - 2250 - 2350 - 2450	80	2 491	2 000	96	34	86	220	

GR-M Spool and cable drum lifter

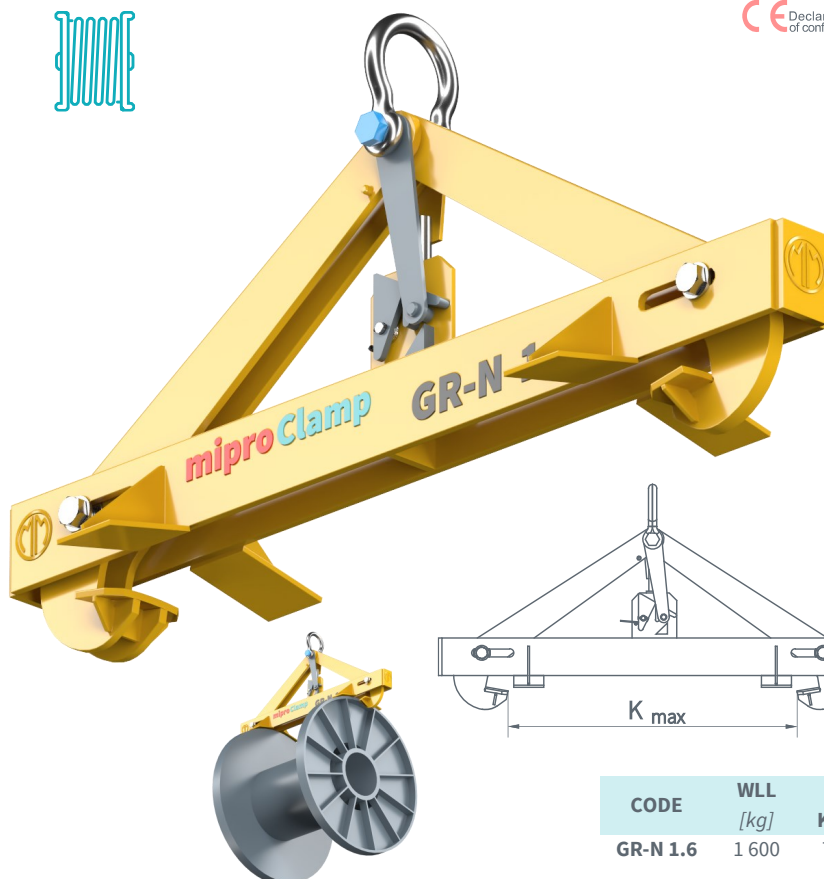


Declaration of conformity
 2006/42/EC manufactured according to Directive
 EN 13155 meets the Standard
 -20 +100°C working temperature
 16 000 max. working cycles
 strength test 100% according to PN-EN 13155
 Made in EU

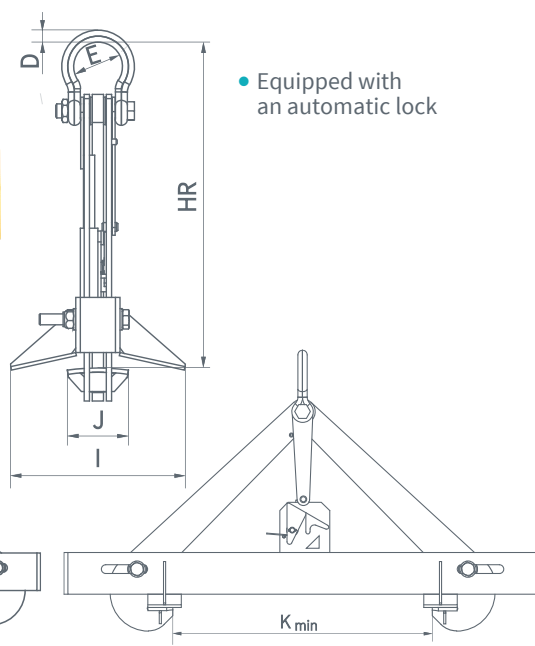


CODE	WLL [kg]	Dimensions [mm]													Mass [kg]
		L	A	G	K	H	HR	P	øM	øN	C	øD	E		
GR-M 1.6	1 600	1 240	700 - 720	50	881	641	672	290	900	870	88	25	112	145	

GR-N Automatic spool and cable drum lifter

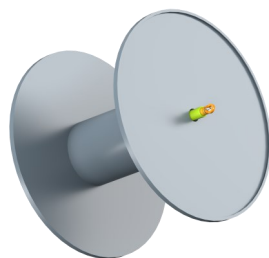


Declaration of conformity
 2006/42/EC manufactured according to Directive
 EN 13155 meets the Standard
 -20 +100°C working temperature
 16 000 max. working cycles
 strength test 100% according to PN-EN 13155
 Made in EU



CODE	WLL [kg]	K max	K min	HR	I	J	øD	øE	Mass [kg]
GR-N 1.6	1 600	771	620	589	317	110	22	88	47

GR-O Spool and cable drum lifter



Declaration of conformity
 2006/42/EC manufactured according to Directive
 EN 13155 meets the Standard
 -20 +100°C working temperature
 16 000 max. working cycles
 strength test 100% according to PN-EN 13155
 Made in EU



- Equipped with a plastic cover
- Rotating lifting eyes

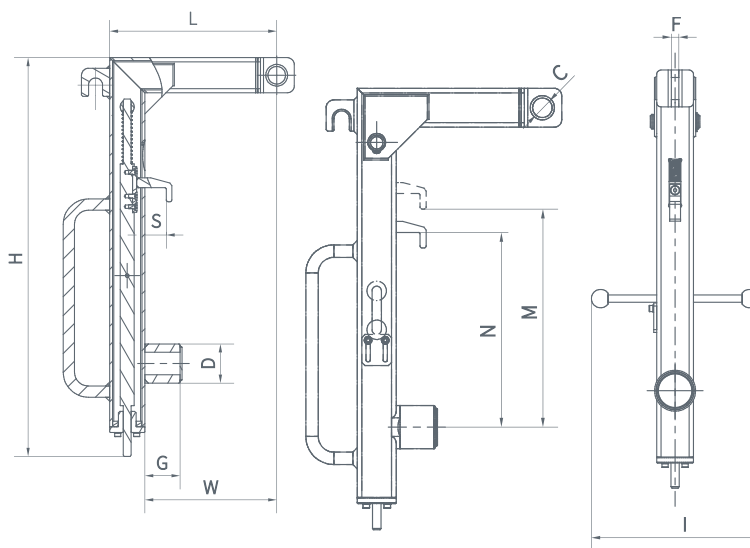
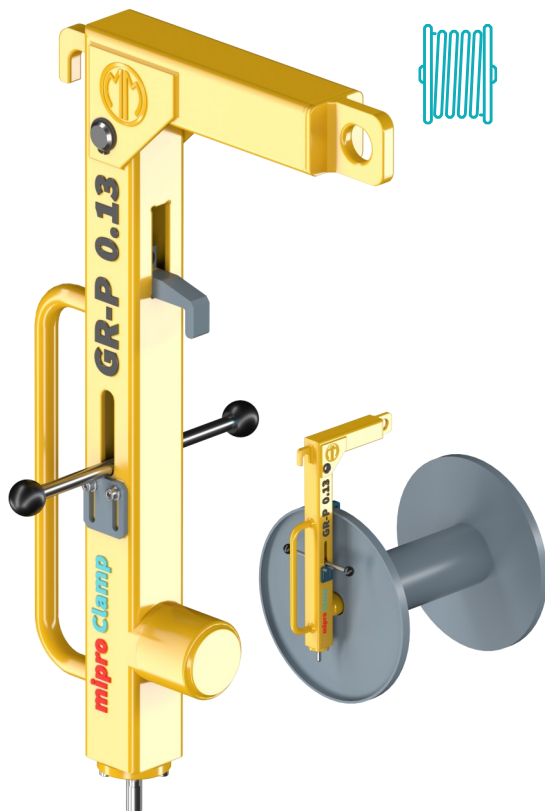


CODE	WLL [kg]	Dimensions [mm]				Mass [kg]
		L	øK	D	E	
GR-O 0.8-0.9	800	1 187	63	55	30	6
GR-O 1.2-1.2	1 200	1 590	92	64	35	18
GR-O 3.0-0.88	3 000	1 389	70	86	50	20

GR-P Spool and cable drum lifter



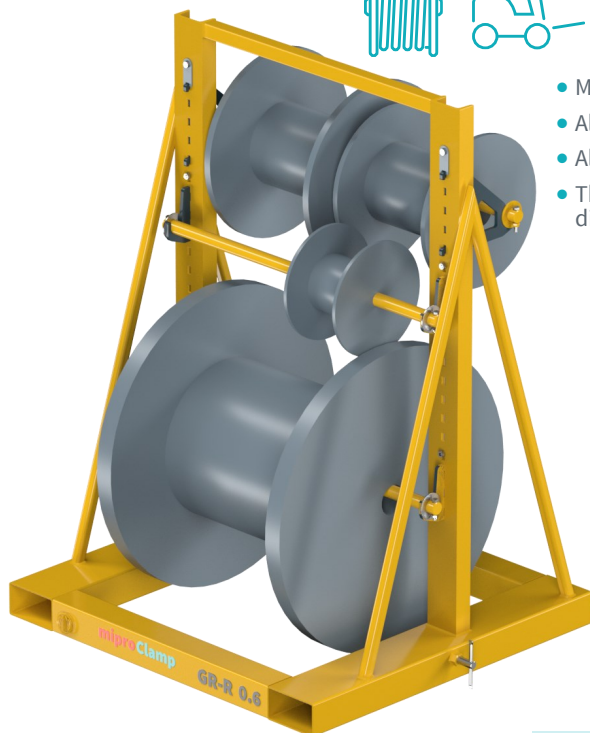
Declaration of conformity
 2006/42/EC manufactured according to Directive
 EN 13155 meets the Standard
 -20 +100°C working temperature
 16 000 max. working cycles
 strength test 100% according to PN-EN 13155
 Made in EU



- The sling is designed for a reel Ø500x375x56

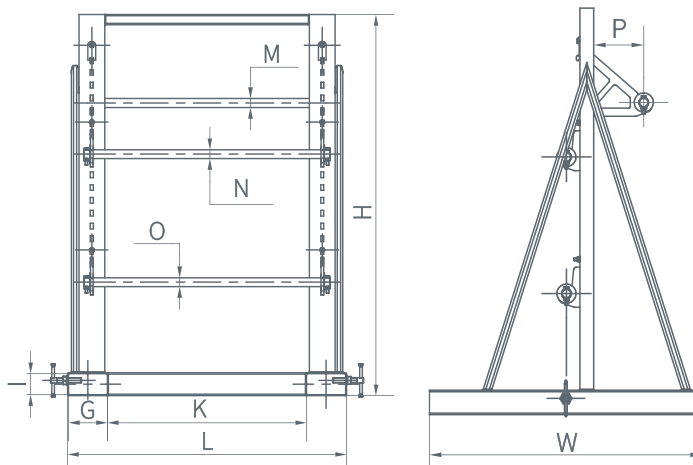
CODE	WLL [kg]	Dimensions [mm]											Mass [kg]
		H	L	S	øD	W	G	øC	M	N	I	F	
GR-P 0.13	130	567	238	30.5	55.5	188	50	25	280	250	227	10	7

GR-R Wire spool rack



CE Declaration of conformity 2006/42/EC manufactured according to Directive EN 13155 meets the Standard -20 +100°C working temperature
16 000 max. working cycles strength test 100% according to PN-EN 13155 Made in EU

- Maximum load of a single shaft 200 kg
- Always secure the hooks with a plate that blocks the hooks
- Always secure the shafts with the locking plate
- The position of the hooks is free, while the load on the stand should be evenly distributed on both sides of the channel section with holes for the hooks

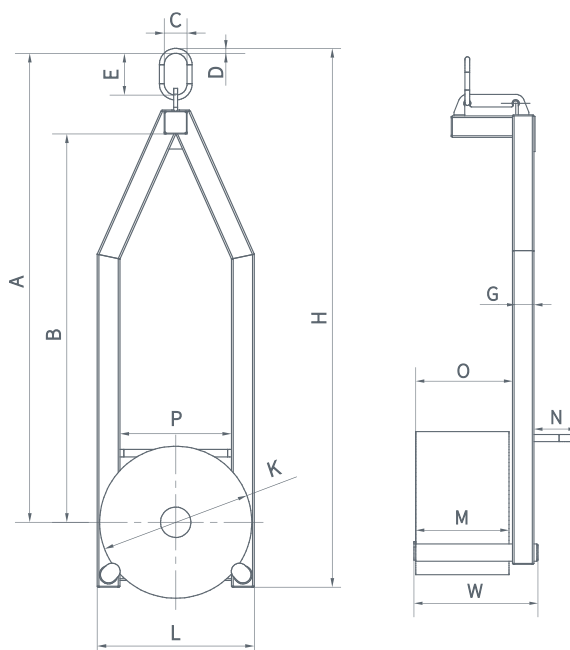


CODE	WLL [kg]	Dimensions [mm]										Mass [kg]
		W	L	K	H	G	I	øM	øN	øO	P	
GR-R 0.6	600	1 090	1 000	778	1 490	152	82	35	35	35	183,5	125

GR-S Spool and cable drum lifter



CE Declaration of conformity 2006/42/EC manufactured according to Directive EN 13155 meets the Standard -20 +100°C working temperature
16 000 max. working cycles strength test 100% according to PN-EN 13155 Made in EU

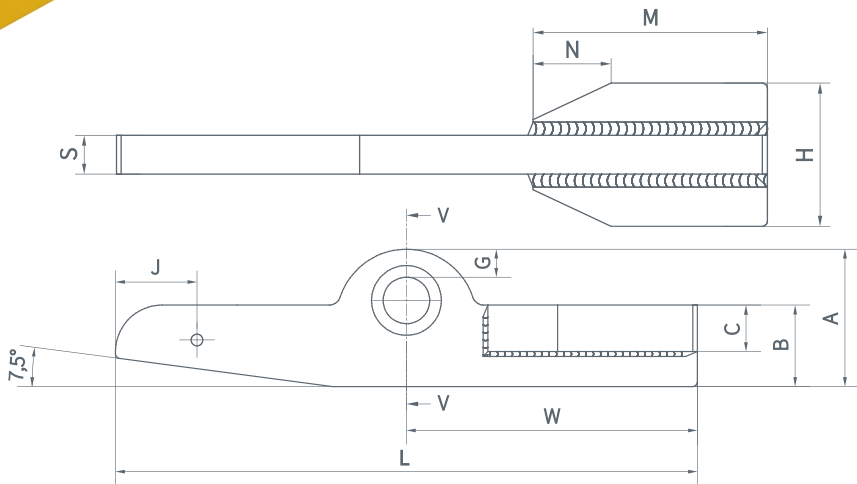
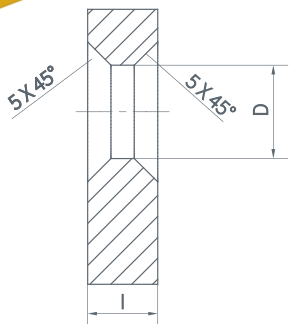


CODE	WLL [kg]	Dimensions [mm]															Mass [kg]
		H	L	A	B	øK	P	C	D	E	W	M	N	G	O		
GR-S 0.2	200	1 418	413	1 234	1 022	400	293,27	60	13	110	346	260	120	51	270	22	

GR-Z Cable drum lifter



Declaration of conformity 2006/42/EC EN 13155 -20 +100°C
max. working cycles 16 000 strength test 100% according to PN-EN 13155 Made in EU



CODE	WLL [kg]	Dimensions [mm]													Mass [kg]
GR-Z 2.5	2 500	L	W	A	B	C	J	G	H	M	N	S	ØD	I	1,5